



**RUSSELL AND DAWSON**  
ARCHITECTURE | ENGINEERING | PLANNING



Bridging Value with Vision,  
Since 1965



# We are Russell and Dawson An Integrated AE Firm

Founded in the architectural landscape of New England, R+D has distinguished itself with a community focused approach. With over 10,000 projects in both the public and private sectors, we specialize in new construction, renovations, and comprehensive project management.

With a 60-year commitment to excellence and inclusivity, we are Connecticut's longest continuously operating small minority-owned business.



## Russell and Dawson Inc



D-U-N-S® Number: 118458117 | AKA: Russell and Dawson Inc. | EIN: 83-1593659

CAGE Code: 980M3 | NAICS Codes: 541310 – Architectural Services, 541330 – Engineering Services



# Russell and Dawson Differentiators

Our team of experienced architects, engineers, and planners brings a wealth of experience and creativity to the table. Trust us to transform your architectural dreams into a concrete reality.

- In-house team of Architects & Engineers
- 59+ years of service in CT, strong local area networking
- Portfolio of >10 sectors
- Four (4) phases (30%, 60%, 90%, 100%) detailed drawings
- Utilizing Building Information Modeling (BIM)
- Using Revit Software: For 3-dimensional well-coordinated drawing that streamlines construction process.
- Won Hartford Business Journal's Family Business Award in 2018 and 2023.



# Russell and Dawson Featured Clients



# Portfolio in Numbers



\*Logo copyright belong to respective brand owners. Logos are used for representation purpose only.

# Our Services

## Designing Spaces with Trust and Creativity, Since 1965!

We are a full-service architectural and engineering design firm that guides your project from concept to completion. We offer a seamless blend of creativity and technical expertise, ensuring aesthetically stunning and functionally sound designs.

### **Our Commitment:**

We are passionate about delivering high-quality design services that are technically robust and creatively inspiring. We prioritize timely project completion and staying within your budget.

Our commitment to excellence has not gone unnoticed in the industry and among our peers. Some notable highlights include the acquisition of Florida-based Singer Architects, winning the **Hartford Business Journal's Family Business Award**, and achieving **LEED Gold certification** for the renovation of the Broward County Judicial Complex, Fort Lauderdale, Florida. Additionally, we have been featured among the **"Best Architects in Hartford,"** and our founders, Dan Russell, and Bob Dawson, have received numerous accolades for their outstanding contributions to the society.

By choosing us, you gain a trusted partner who will see your project through to success.

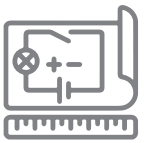


Architectural Design  
Mechanical Design  
Electrical Design  
Plumbing Design  
Structural Design  
On-Call Services  
Sustainable Design  
Site Evaluation & Planning  
Interior Design



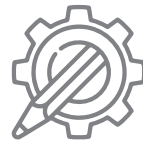
## Architectural Design

Our passionate architects understand your vision beyond square footage. Our licensed and certified professionals tackle projects from new buildings to intricate renovations, navigating complexities with a collaborative approach that keeps you involved with each and every step of your dream project.



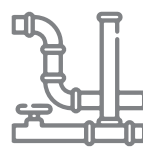
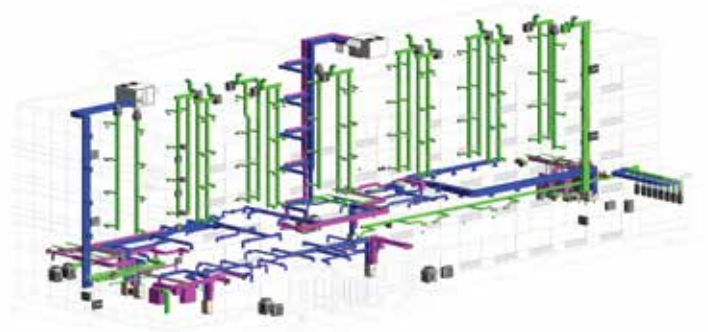
## Electrical Design

Our engineers outline major electrical sub systems to demonstrate that the preferred alternative can be implemented, that it represents the best solution to the requirements of the project, and that it complies with all governing codes and regulations. The design team furnish energy consumption report and life cycle cost analysis of energy consumption, annual energy consumption (BTUs) per building system.



## Mechanical Design

Our mechanical engineers are experts in using the latest design tools and industry-standard codes to deliver energy-efficient solutions. We are well-versed with various industry-standard codes such as International Plumbing Code, American Society of Heating, Refrigerating and Air-Conditioning Engineers, National Fire Protection Association, International Energy Conservation Code and possess the ability to adhere with industry specific drafting standards that ensures optimum solutions for Our Clients and assures code-compliant efficient deliveries of all MEP projects.



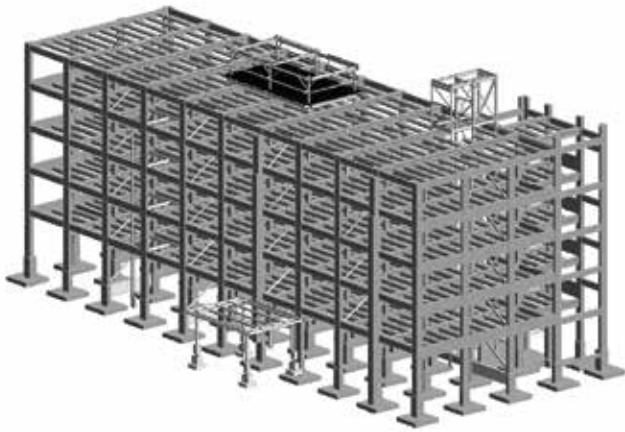
## Plumbing Design

Conceptual designs will indicate proposed plan form, site plan, and general plumbing system approach. We'll outline major plumbing subsystems to demonstrate feasibility, optimality, and code compliance. The design team will provide a preliminary HVAC system description, including central plant, duct chases, major duct runs, and annual energy consumption per building system.



## Structural Design

Our expert structural engineers design, analyze, plan, inspect, and research structural components and systems, considering technical, fiscal, and environmental factors. We pride ourselves in delivering sound designs, empowering clients to envision the project structure through synchronized model-based designs. We collaborate with architects, owners, and contractors to provide elegant solutions for projects of all types, sizes, and complexities.



## Site Evaluation & Planning

Site evaluations present questions about costs, regulations, square footage, and timelines. R+D has the expertise to address these concerns. Since 1965, we have worked on over 500 projects, providing services like reports, inspections, site planning, zoning, feasibility studies, code reviews, advisory, and models. We help clients make informed decisions about their projects.



## Sustainable Design

Sustainable design drives innovation and sets new standards. We at R+D believe in our clients' dreams. We leverage our versatile and sustainable design process to turn those dreams into reality. We ensure compliance with international standards.



## On-Call Services

Our on-call design services provide immediate, expert support from experienced architects, ensuring your projects stay on time and within budget. Benefit from responsive communication, rapid turnaround times, comprehensive support, and expert design solutions for a wide range of project types.



## Interior Design

R+D creates beautiful, functional interiors from concept to completion. We provide interior design services for new construction and renovations, including hotels, educational facilities, healthcare, offices, and industrial buildings. Our organized approach involves clients in every phase of planning, construction, and finishing. We coordinate with technical consultants for lighting, audio/visual, and landscape design to ensure everything is well-coordinated.

# Transforming Your Vision into Reality





# Hospitality

## PROJECTS

66+

Hilton brands

42+

IHG brands

34+

Choice Hotels

46+

Marriott Hotels

21+

Wyndham  
Hotel Group

4

Hyatt Hotels

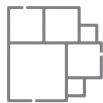


## Aloft Hotels

A Sustainable Upscale Hotel Renovation by R+D



Framingham, MA



155,000 sq. ft.



Hotel Renovation & Redesign

### Overview

R+D provided Architecture and MEP Engineering Services (Structural, MEP, HVAC) for Hotel Renovation & Redesign. Hotel which was built in 1969 converted into an upscale hotel with mixed-use development and Sustainable Design Services (Groundwater recharge, LED site lighting and energy improvements) with a project value of \$13 million.





# Multifamily



## Alexandria Manor

Transformation: A Full-Service Renovation by R+D

## Alexandria Manor

Senior Living Centers



Bloomfield, CT



74,477 sq. ft.



46 Apartments



Architecture Design Services, Structural, MEPF & Engineering Services

### Overview

R+D provided full-service Architectural, MEPF Engineering, and Structural Plans for the conversion of the existing building that formerly housed the Alexandria Manor Nursing Home into 46 apartments (28 apartment units on the first floor and 18 apartments units on the second floor with related site work).

The scope of work consisted of demolition plans, MEP plans, fire rating diagrams, floor plans, and unit-wise enlarged plans and elevations, lighting plans, kitchen millwork drawings, etc. The project consisted of 23 unit types out of which some units were ADA compliant and included DENs.



K-12



Building the Future of Education: R+D Delivers Structural Engineering for  
**JAFCO Children's Ability Center**



Sunrise, FL



Architecture and Engineering Design Services

**Overview**

The JAFCO Respite and Residential Center in Sunrise, Florida, is a unique facility that provides care for differently abled children. It offers three residential homes for respite care and temporary shelter, alongside a support facility with advanced treatment, research, and education resources. The center's design prioritizes accessibility and integration with the surrounding natural environment.

The three residential homes feature an open floor plan for easy supervision and connection to nature. The support facility is divided into three wings: Administrative, Therapy, and Multipurpose, connected by a central lobby. The wings strategically define public, semi-public, and private spaces, ensuring a balance between functionality and accessibility.

The center's location near the Daniel D. Cantor Senior Center and Federation Housing Incorporated enhances its accessibility and integration within the community. The park and trails further blur the boundaries between the interior and exterior, creating a welcoming and inclusive environment for all.



# Healthcare



A Symphony of Design: R+D Creates a Harmonious Blend of Modern and Historic Architecture for **Young Pharmaceuticals**.



Wethersfield, CT



20,000 sq. ft.



Conceptual Architectural Design, Structural & MEPFS Engineering (HVAC, Electrical, Plumbing, Fire Systems) Design Services

## Overview

The team at R+D completed a design project for Young Pharmaceuticals for their new headquarters in Wethersfield, Connecticut. The project was a contemporary approach to a historic-looking structure. It is a 20,000 square foot office building with research and development activities as part of the program. Because the plot slopes gently downward, the north-facing side of the building appears to be only one story, while both floors are visible from the south. The brick exterior combined with the beautiful custom built clock tower are a few of the unique features of this one-of-a-kind project. An artistic rendering of the structure shows a brick building with wide, arched windows, topped by a white cupola.

R+D was involved in the conceptual design and construction documents of the architecture, structure, mechanical, electrical, and plumbing of this building. The historic exterior is combined with modern engineering to meet all current codes and to make an energy efficient building.



# Municipal



Preserving History: Comprehensive Restoration of the **ELM City Communities** by R+D



New Haven, CT



128



Renovations of multiple site properties for a multi-family residential project.

## Overview

The services consisted of architectural services and engineering services for an analysis of existing conditions of 128 townhouses that were a mix of 2/3 stories, scattered across 7 different locations within New Haven, CT.

Documenting existing conditions and defining the scope of work for exterior envelope roof, siding and window upgrades, and interior, bathroom, kitchen, finishes, & mechanical upgrades. We prepared 40% of construction documents, book specifications, & preliminary construction estimates along with filling CHFA forms.

R+D also carried out laser scanning and point cloud modeling to create accurate models of existing conditions. R+D and its team, completed the construction documents in accordance with the approved scope of work to a very tight time frame and within budget.



# Industrial



Expanding Flavors, Expanding Spaces: R+D Designs a Growing Headquarters for **OSF Flavors**.



Windsor, CT



43,370 sq. ft.



Architecture and Engineering Design Services

## Overview

R+D provided Architectural Design Services and engineered a 22,670 sq. ft. industrial space addition and a 20,700 sq. ft. 2-story office and laboratory space addition for OSF Flavors Inc. in Windsor, CT. These additions are added to an already existing 90,000 sq. ft. warehouse building, to meet with the growing space demand for the flavour manufacturer.

The addition features to serve as the North American Headquarters for the growing flavor manufacturer. The flex addition project has combined the old and the new building to convey a unified facade design to upgrade the overall exterior of the building. The steel-framed structure is clad with aluminum composite panels on the front facade. The office addition will house offices and testing laboratories for the flavours.



## Office & Retail



A Fresh Look for **Stop & Shop**:  
R+D Delivers a Modernized Grocery Experience



Vernon, CT



81,769 sq. ft.



Architecture Design Services and MEPF Engineering

### Overview

The Stop and Shop in Vernon CT owned by Stop & Shop Supermarket Co. underwent significant renovations in terms of store layout, lighting, and interior finish updates. R+D were involved in architectural design and MEP engineering for all aspects of this major renovation. The speed and efficiency displayed by the design as well as the construction team in this project were noteworthy. The premium grocery store proudly serves the neighbors in the Vernon Rockville community.



# Community



Nurturing **Communities** Through Pro Bono Design: Creating Spaces of Unity, Compassion, and Well-being



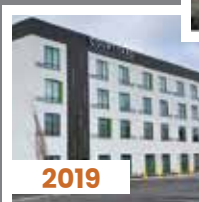
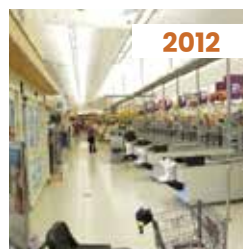
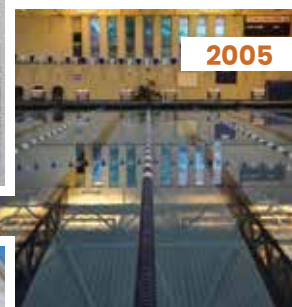
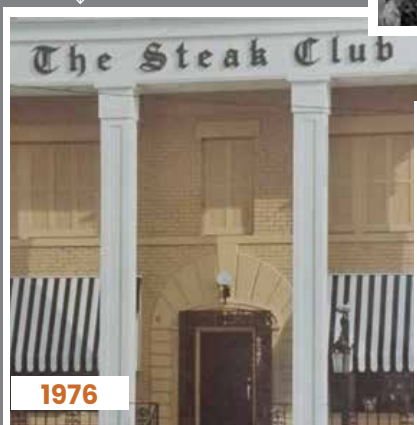
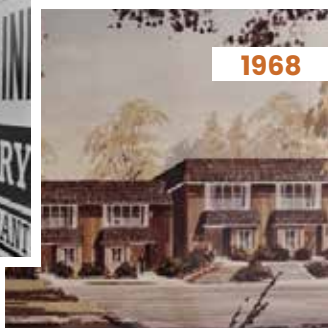
## Architecture and Engineering Design Services

### Overview

Our firm is deeply committed to giving back to the community through our pro bono and discounted architectural and engineering services. We have proudly completed over 20 pro bono projects, including homes for veterans, animal shelters, and places of worship representing diverse faiths.

Our dedication to animal welfare is reflected in the 15+ animal shelter projects we have undertaken, while our commitment to interfaith harmony is evident in the 70+ worship places we have designed for various religious communities. Additionally, we have contributed to the well-being of our local communities by designing five community centers catering to Christian, Jewish, and Islamic populations. Through these projects, we strive to make a positive impact and create spaces that foster inclusivity, compassion, and well-being for all.

# Glimpses of our Journey, Since 1965!



the journey continues...



# Meet Our Team



**Chirag B. Thaker**  
President

MBA, International Business,  
Rensselaer Polytechnic  
Institute



**Thomas A. Manning, AIA**  
VP Architectural

B.S., Building Science,  
Rensselaer Polytechnic  
Institute



**John T. Wilcox, RA**  
Director of Design

Master of Architecture,  
University of Pennsylvania



**Zhanxiao Ma, P.E.**  
VP Engineering

M.Sc., Structural Engineering,  
West Virginia University



**M. Hassan Haghpanah, P.E.**  
VP Engineering

M.S., Mechanical Engineering,  
Western Michigan University



**Col. Sanjeev Gupta,  
Retired**

VP - Operations

M Arch, IIT India,  
MBA, UBS PU,  
B Arch, CCA PU,  
Project Management  
Professional (PMP)<sup>®</sup>, PMI



**Sanjeev Thakker**  
VP Marketing &  
Corp. Communications

---

Master's Diploma in Digital  
Marketing and Media



**Ralph Spinelli**  
Project Architect

---



**RUSSELL AND DAWSON**  
ARCHITECTURE | ENGINEERING | PLANNING



Let's discuss how we can turn your vision into a reality



+1 860 289 1100



info@rdaep.com



www.rdaep.com



1111 Main Street, East Hartford, CT 06108-2241

